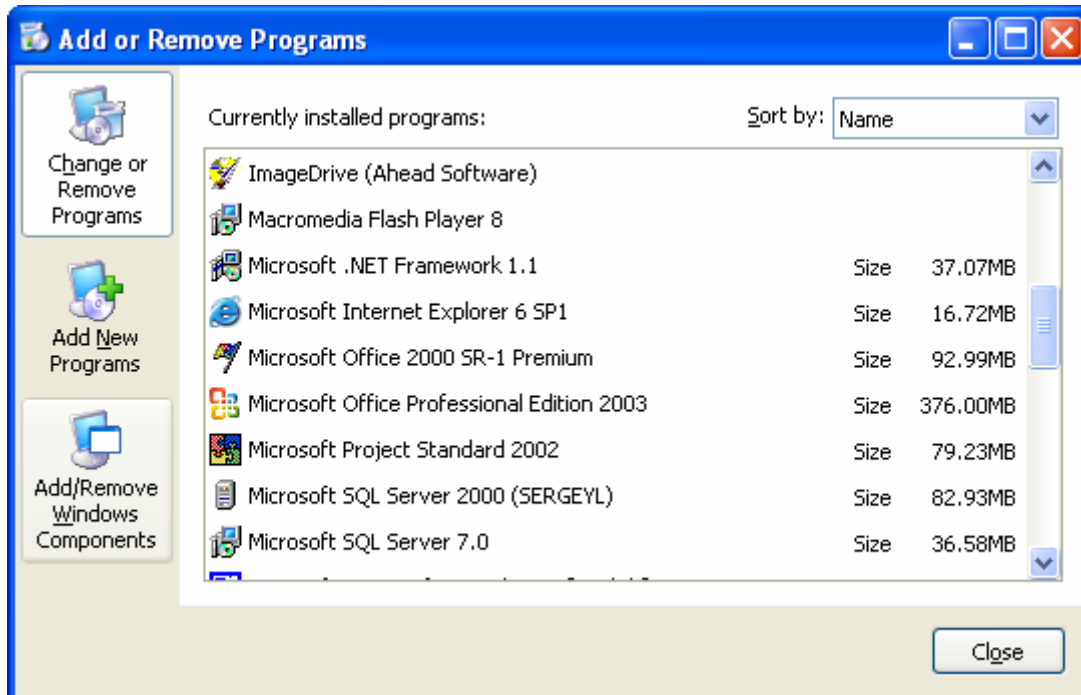


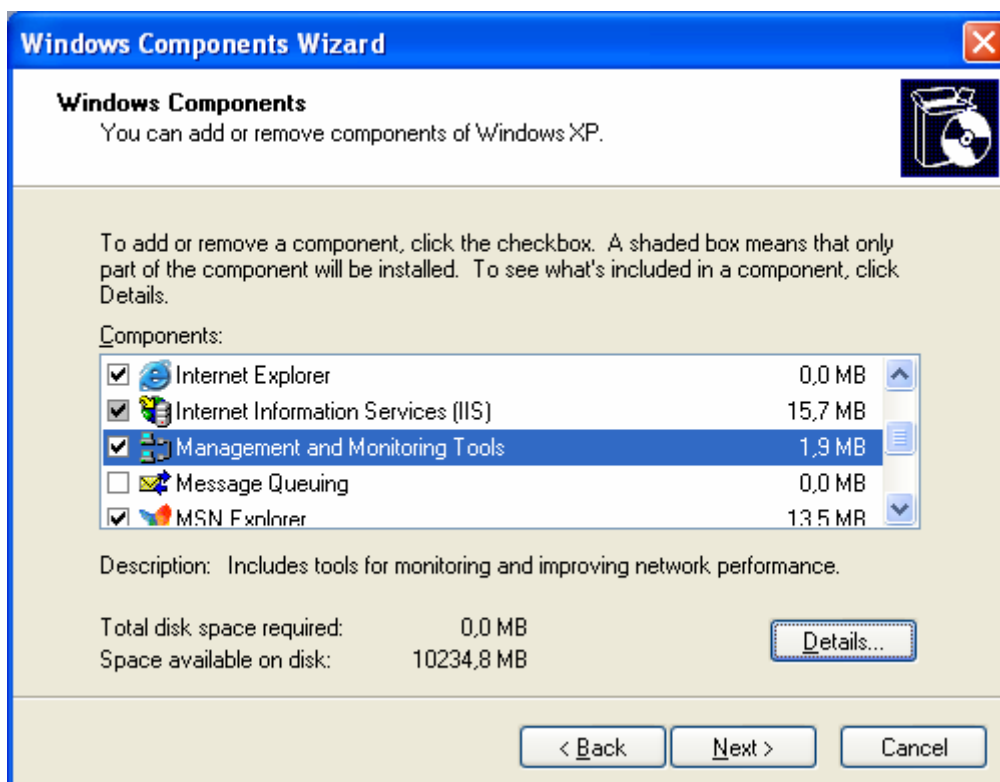
# Installing Microsoft SNMP Agent on Microsoft Windows systems

## Windows XP, 2000, and 2003

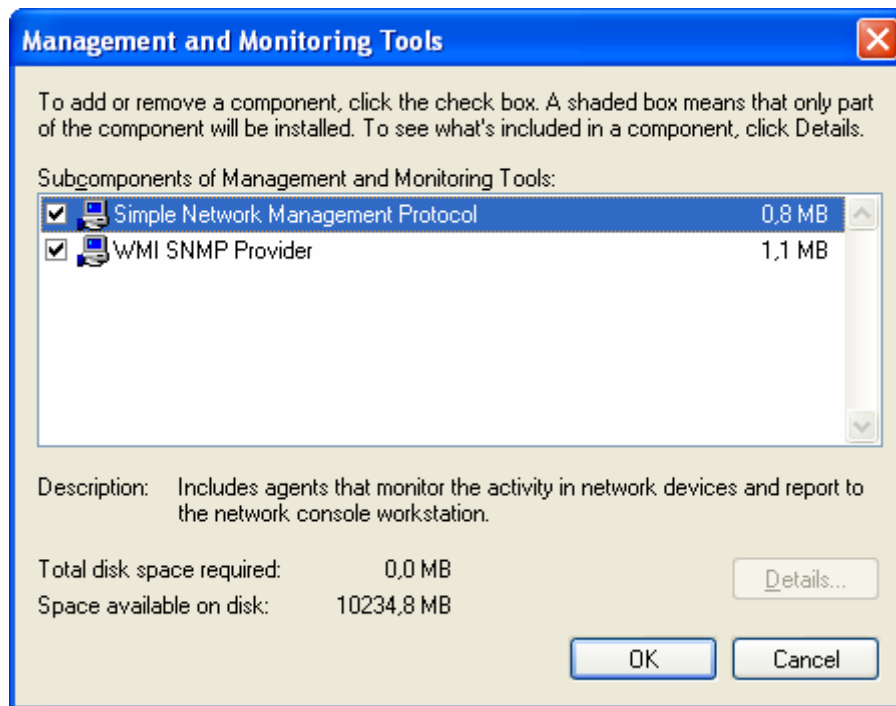
1. Launch **Control Panel**, double click **Add or Remove Programs** and click **Add/Remove Windows Components**.



2. In **Components**, select **Management and Monitoring Tools** (but do not select or clear its check box), and then click **Details**.



3. Select the **Simple Network Management Protocol** check box, and click **OK**.



4. Click **Next**.
5. Insert the respective CD or specify the complete path of the location at which the files stored.
6. SNMP starts automatically after installation.

## Notes

- Certain Windows components require configuration before they can be used. If you installed one or more of these components but did not configure them, when you click **Add/Remove Windows Components**, a list of components that need to be configured is displayed. To start the Windows Components Wizard, click **Components**.
- You must be logged on as an administrator or a member of the Administrators group in order to complete this procedure. If your computer is connected to a network, network policy settings may also prevent you from completing this procedure.
- To stop service or restart it, click **Start**, **Stop**, or **Restart** on the service **Action menu**.

## Windows NT

1. Right-click the **Network Neighborhood** icon on the Desktop.
2. Click **Properties**.
3. Click **Services**.
4. Click **Add**. The Select Network Service dialog box appears.
5. In the Network Service list, click **SNMP Service**, and then click **OK**.
6. Insert the respective CD or specify the complete path of the location at which the files stored and click **Continue**.
7. After the necessary files are copied to your computer, the **Microsoft SNMP Properties** dialog box appears.

## Windows 98

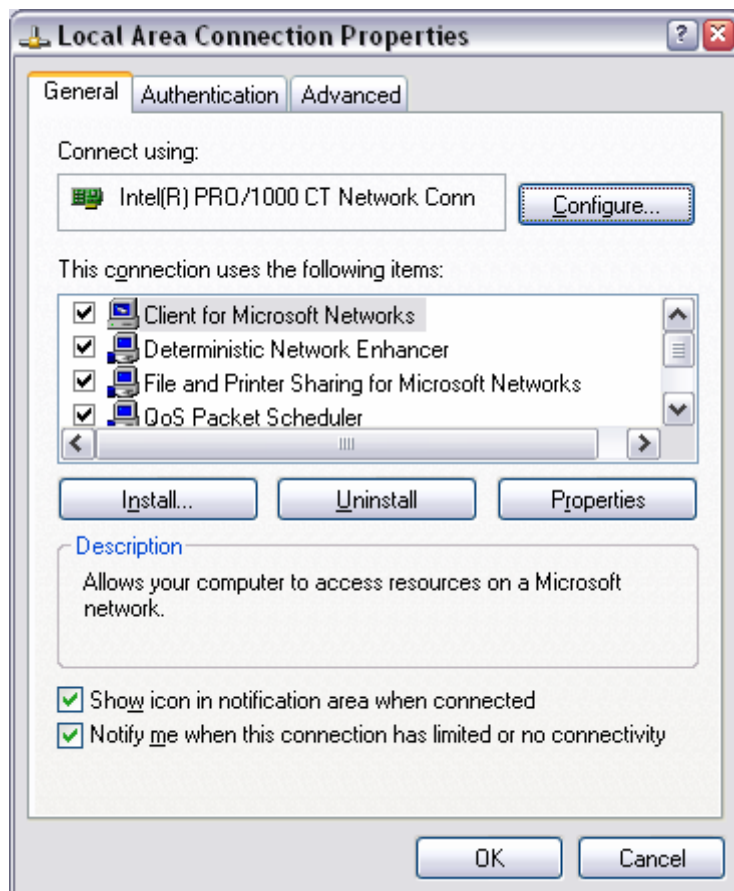
Make sure your Windows 98 CD is in the drive. Then follow the steps given below:

1. On the **Network** control panel, click **Add**.
2. Double-click **Service** in the **Select Network Component Type** dialog box.
3. Click **Have Disk** in the **Select Network Service** dialog box.
4. Type the path to the "TOOLS\RESKIT\NETADMIN\SNMP" directory on your computer's CD drive in the **Install From Disk** dialog box and then click **OK**.
5. Select **Microsoft SNMP agent** from the **Models** list in the **Select Network Service** dialog box and then click **OK**.

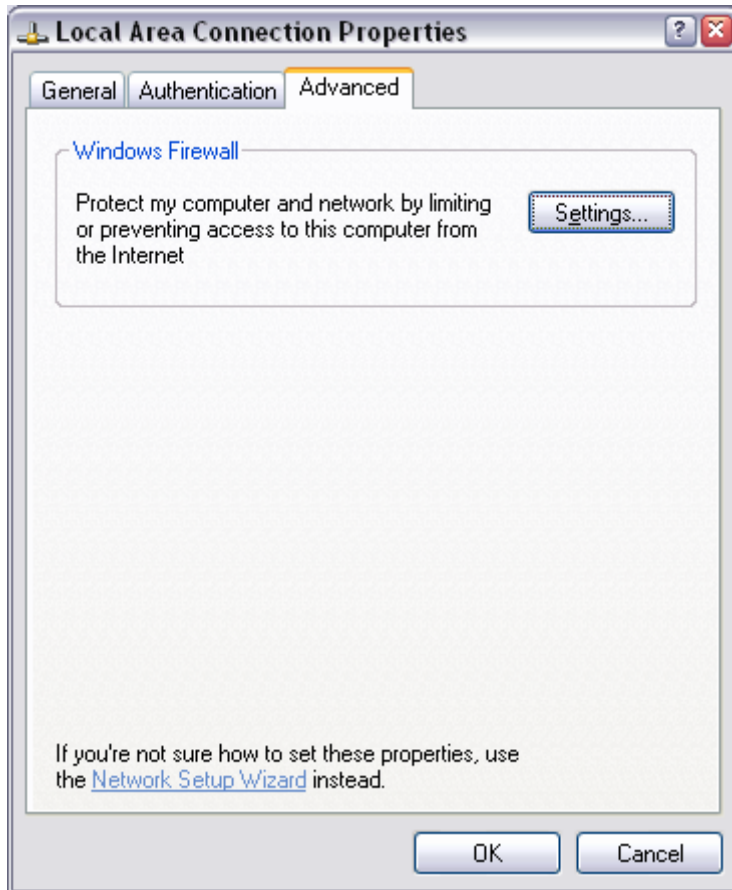
## Firewall settings.

If you use any firewall on your computer you should open UDP port 161 to accept packets from management console to your computer. If you are planning to use your computer as a management console you should open port 162 as well for traps from SNMP agent.

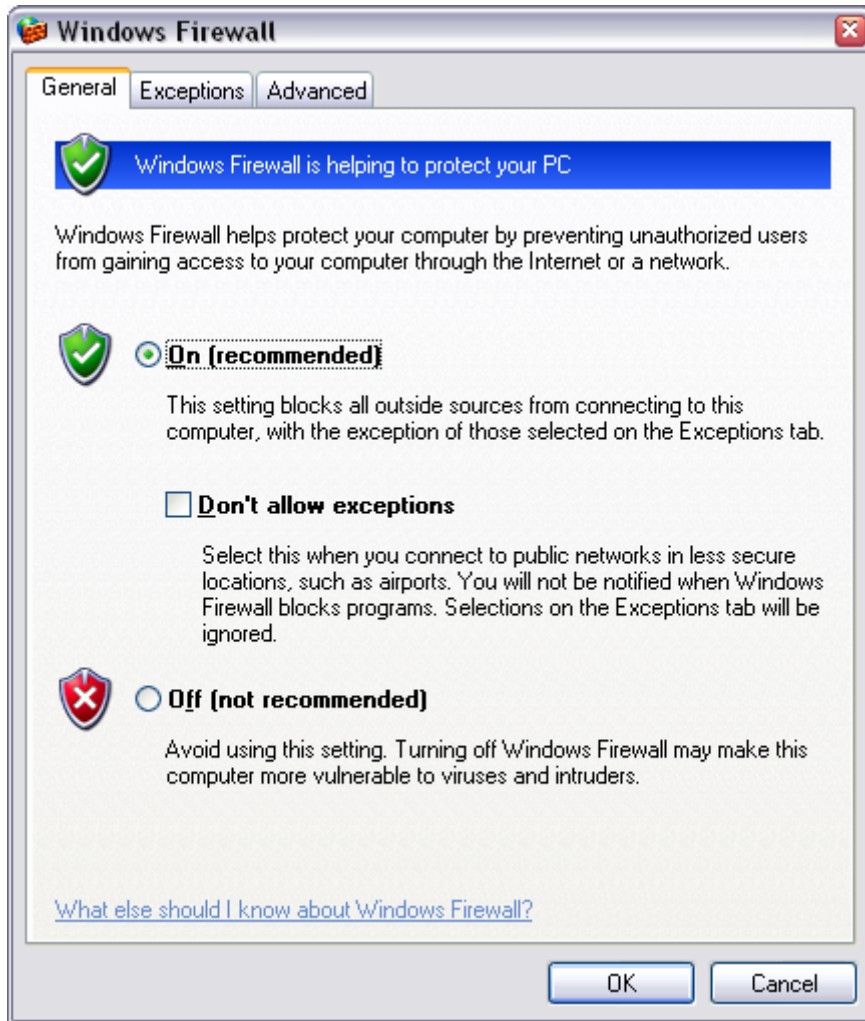
1. Go to **Control Panel -> Network and Internet Connections -> Network Connections** and select an interface which will answer on SNMP requests.
2. Right-click on the selected interface and select **Properties** from the drop-down menu.



3. Select **Advanced** tab.

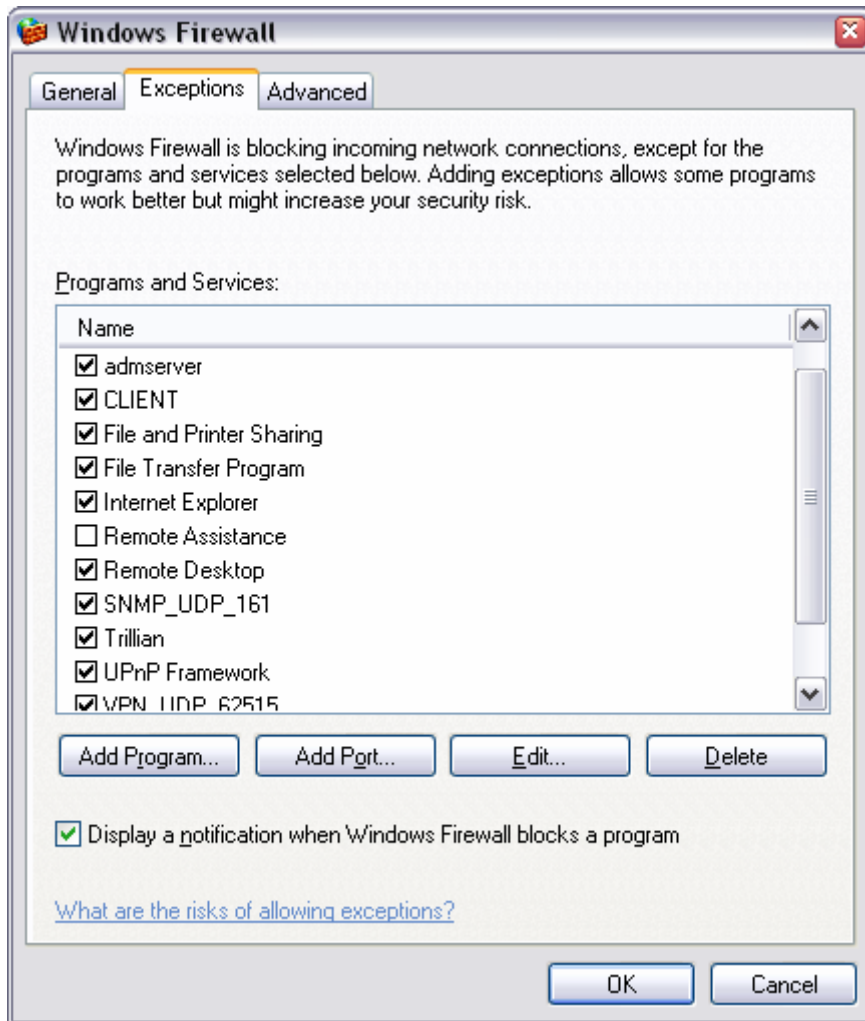


4. Click on **Settings** button.

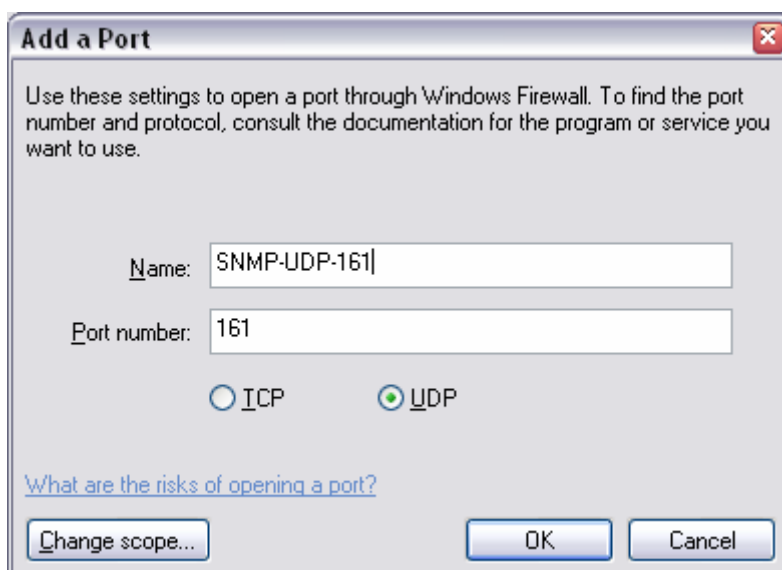


- If Firewall is off, then your computer will accept any TCP/IP connection but that makes your computer vulnerable.

5. Select tab **Exceptions**. Check all services and if it SNMP is not present click **Add Port** button.



6. Enter service description, port number and protocol and click **OK**.



7. If you want to allow SNMP requests only from a set of addresses, then click on **Change scope** and specify addresses.